

# Michigan Profile for Healthy Youth:

The first step in data-driven  
decision making

Bob Higgins, M.A., C.P.C

Jim O'Neill, Ph.D.

Michigan Department of Education



# We'll Cover:

- Importance of state and local level data
- Project background and goals
- Statewide Prevention Needs Assessment and Surveillance System, including the Michigan Profile for Healthy Youth (MiPHY)
- Status of MiPHY
- Comparison of MiPHY and Michigan YRBS

# Importance of Data: State Level

- Michigan Youth Risk Behavior Survey (YRBS)
  - Drives decision making for health prevention and promo throughout the state
  - Directly supports SDFS funding, teen health centers, family resource centers, Michigan Model, school resource officers
  - Provides evidence to federal level to sustain funding for state health prevention and promotion programs
  - Provides benchmarks for local level data
  - Demonstrates connection between health behaviors and academic achievement

# State Title IV SDFSCA Program



## Background:

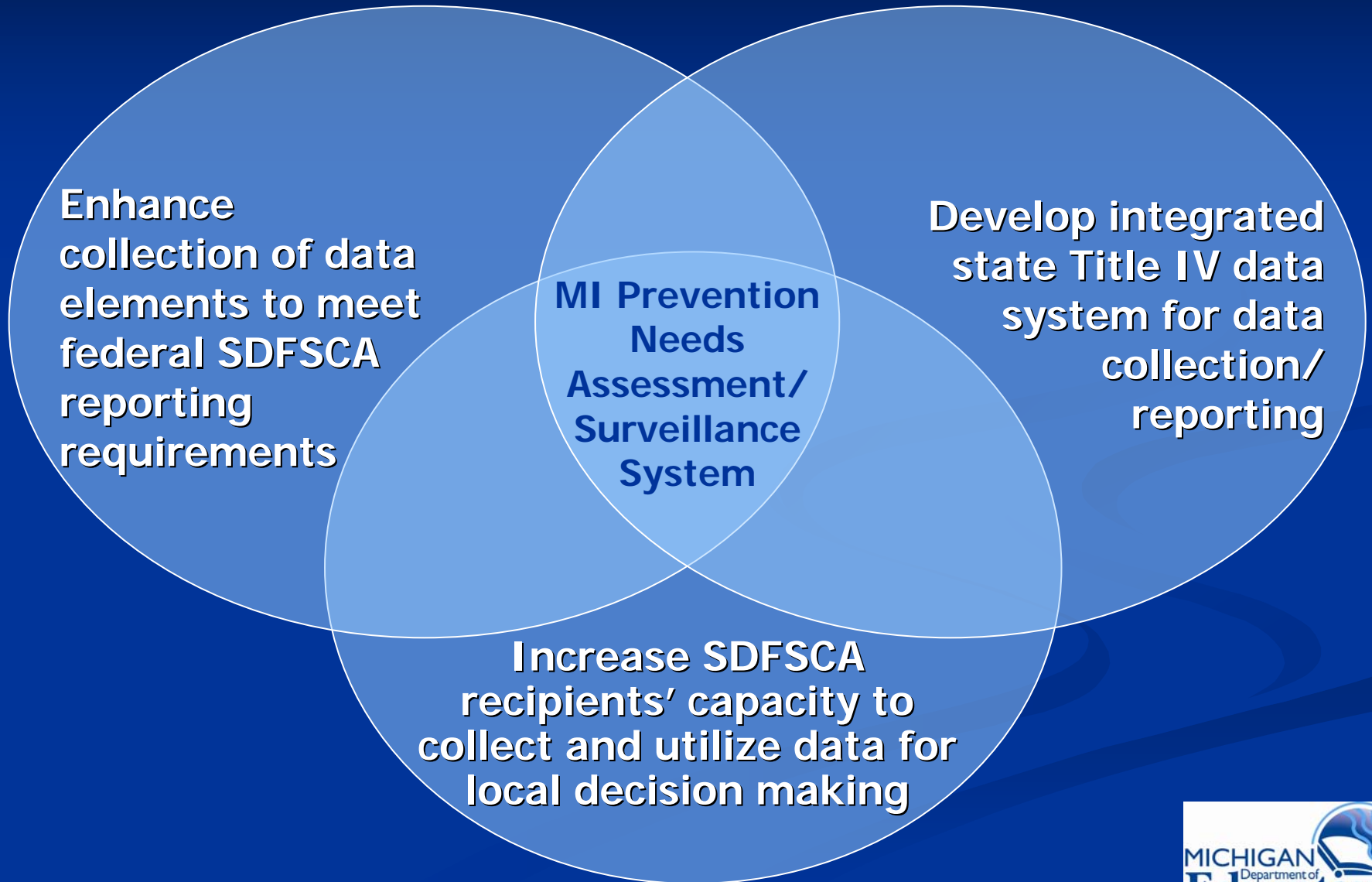
- H.R. 1 - Title IV, Part A, Safe and Drug-Free Schools and Communities Act (SDFSCA) of *No Child Left Behind*
- Funds are distributed to States (to SEA) from U.S. Dept. of Education (USDOE)
- SDFSCA dollars are allotted to States based on school-aged population and relative share of Title I concentration grant
- MI SDFSCA Award in FY2005 is \$16.25M; \$12.1 million was allocated to the over 800 school districts & public school academies
- MI SDFSCA program administered through Office of Drug Control Policy (MDCH)

# Title IV Grant Management Project

## Background:

- Funded through USDOE SDFSCA National Program
- 3-Year grant (FY2004/05 – 2006/07)
- Designed to help states improve management of the State SDFSCA program
- Grant awarded to 10 other states
- MI project is a collaboration between MDE and MDCH/ODCP.

# Title IV Grant Management Project Goals



# Statewide Prevention Needs Assessment/Surveillance System

## Why?

- **Schools across MI want/need local data to inform a variety of efforts:**
  - Title IV SDFSCA and Governor's Discretionary Grant (GDG) programs
  - Coordinated School Health Program
  - District/School improvement (e.g., MI Education Yes, NCA)
  - Community-wide prevention efforts (e.g., Community Collaboratives, community coalitions, regional Substance Abuse Coordinating Agencies, Title V Delinquency Prevention, local public health)

# Statewide Prevention Needs Assessment/Surveillance System

## Why?

- Best Practice for prevention science and at MDE/MDCH
- Closes Capacity Gap. Most schools do not have the time, resources and/or skills to collect, enter, manage, analyze, and report drug and violence data, especially trend data
- Opens up much-needed resources for other steps of SPF at state, regional, and local level

# Statewide Prevention Needs Assessment/Surveillance System

## Indicators

### A. School Records:

Drug use/possession and violent behaviors currently collected for Title IV SDFSCA:

- Location, Time, and Primary Victim of Incident (SRSD)
- Violence, Safety, and Illegal Possession (School Infrastructure Database: Fields 1 – 28, 43, 44)

# Statewide Prevention Needs Assessment/Surveillance System

## Indicators (cont'd)

### B. Student Survey:

#### Michigan Profile for Healthy Youth (MiPHY)

- MiPHY developed mostly from two sources:
  - MI Youth Risk Behavior Survey (YRBS)
  - Communities that Care (CTC) Youth Survey
- MiPHY has two versions
  - MiPHY- all risk behavior and risk and protective factor domains
  - MiPHY Basic – the MiPHY survey excluding the suicide and sexual behavior questions

# MiPHY Features

- Endorsed by MDE and MDCH
- Meets needs assessment and reporting requirements for Title IV SDFS and aligns with school health improvement initiatives
- Reduces the burden of conducting multiple student surveys
- Reliable and Valid
- Free of charge to districts and communities
- Private
- Local use and local-level decision making
- Passive parental consent

# MiPHY Features

- Online administration
- Grades 7, 9, and 11 (middle and high school students): census or sample populations
- Offered every other year, starting in FY 2007/2008 (off year of the state YRBS)
- Data availability
  - ISD
  - District
  - Building
  - County level (partner web system)
    - Participation levels rely on partnerships

# MiPHY Survey Tool

		Domain				
		Individual	Peer	School	Family	Community
<b>Risk Behaviors</b>	<ul style="list-style-type: none"> <li>■ Lifetime and past-30-day SU</li> <li>■ Poor health and safety behaviors</li> <li>■ Depression, suicide, sexual risk behavior</li> </ul>	N/A				
	<ul style="list-style-type: none"> <li>■ Age of initiation of SU</li> <li>■ Favorable attitudes toward SU</li> <li>■ Perceived harm of SU</li> </ul>	<ul style="list-style-type: none"> <li>■ Peers who engage in SU and violent behavior</li> </ul>	<ul style="list-style-type: none"> <li>■ Academic failure</li> <li>■ Low commitment to school</li> <li>■ Perception of school as unsafe</li> </ul>	<ul style="list-style-type: none"> <li>■ Parental attitudes favorable toward SU</li> </ul>	<ul style="list-style-type: none"> <li>■ Low neighborhood attachment</li> <li>■ Perceived availability of drugs</li> <li>■ Perception of neighborhood as unsafe</li> </ul>	
<b>Protective Factors</b>	<ul style="list-style-type: none"> <li>■ Belief in moral Order</li> <li>■ Social skills</li> </ul>	<ul style="list-style-type: none"> <li>■ Perception of peer disapproval of substance use</li> </ul>	<ul style="list-style-type: none"> <li>■ Opportunities for involvement</li> <li>■ Rewards for involvement</li> </ul>	<ul style="list-style-type: none"> <li>■ High family attachment</li> <li>■ Opportunities for involvement</li> <li>■ Rewards for involvement</li> </ul>	<ul style="list-style-type: none"> <li>■ Opportunities for involvement</li> <li>■ Rewards for involvement</li> </ul>	

# MiPHY Framework

- Building-level online data collection system using secure web portal
  - School Personnel: SID, SRSD
  - Students: MiPHY
- Online, automated rapid report system, including comparison data (county/state) and trend data accessible by authorized school personnel
- Ongoing system technical support to schools

## Michigan Profile for Healthy Youth

## MiPHY Middle School, MiPHY School District



## Demographics Summary

The Michigan Profile for Healthy Youth (MiPHY) was completed by 7, 9, and 11th grade students in Michigan schools during the spring of 2006. The results are representative of students in those grades surveyed in your building. Demographic characteristics of the sample are as follows:

	N	Missing	%		N	Missing	%		N	Missing	%
Building (7th grade)	73	1	100.0%	<u>Gender</u>				<u>Race / Ethnicity</u>			
				Males	31	1	42.5%	American Indian	5	0	8.8%
<u>Grade</u>				Females	41	0	56.2%	Black	4	1	5.5%
7th grade	73	1	100.0%	<u>Academics</u>				Hispanic/Latino	3	0	4.1%
				As/Bs	58	1	79.5%	White	54	0	74.0%
				Ds/Fs	2	0	2.7%				

Students completed an on-line, anonymous 145-item questionnaire. Survey procedures were designed to protect the privacy of students by allowing for anonymous and voluntary participation. Local parental permission procedures were followed before survey administration.

Reports on data results are available by risk behavior and domain and are aggregated by each of the above subgroups, if possible. Results of any category are suppressed if less than 10 valid student responses are available and is identified by a "-." Comparison statewide data are provided from the 2005 Michigan Youth Risk Behavior Survey.

Notes and aggregation information:

N = Number of unweighted valid student surveys. Valid surveys are those containing at least 20 or more complete responses after data cleaning.

Missing = number of non-valid student surveys that were removed due to data cleaning rules.

% = the unweighted percentage of valid student surveys.

Academics uses student self-report of grades earned in school to estimate academic achievement. Students with high grades are those who report getting mostly As and mostly Bs; students with low grades are those who report getting mostly Ds and mostly Fs.

Race/ethnicity was assessed through use of a single question directly taken from the Youth Risk Behavior Survey developed by the Centers for Disease Control and Prevention. Students can select more than one option. For this summary, students were classified as American Indian, Black (non-Hispanic), or White (non-Hispanic) if they only selected the respective group. Students were classified as Hispanic or Latino if they selected "Hispanic or Latino" only or "Hispanic or Latino" plus any other response option. Dissaggregation of the race/ethnicity categories for those who indicated "Asian," "Native Hawaiian or Other Pacific Islander," and Multiple Race (includes students who selected more than one race/ethnicity category, excluding "Hispanic or Latino.") has been suppressed.

## Michigan Profile for Healthy Youth

MiPHY Middle School, MiPHY School District



## Tobacco

% = unweighted percentage of reported response. (n) = number of students with reported response.

		Grade	Gender		Race/Ethnicity				Academics	
	Building <sup>1</sup>	7	M	F	Black	White	Hispanic	American Indian	As/Bs	Ds/Fs
<b>ATTITUDES TOWARD TOBACCO</b>										
Percentage of students who reported sort of easy or very easy to get cigarettes	33.8% (24)	33.8% (24)	26.7% (8)	39.0% (16)	-	30.2% (16)	-	-	31.0% (18)	-
Percentage of students who reported regular cigarette use to be a moderate or great risk	83.1% (59)	83.1% (59)	76.7% (23)	87.8% (36)	-	86.8% (46)	-	-	82.8% (48)	-
Percentage of students who reported cigarette use by peers to be wrong or very wrong	92.9% (65)	92.9% (65)	93.3% (28)	92.5% (37)	-	92.3% (48)	-	-	91.2% (52)	-
Percentage of students who reported they thought none or some of their friends had smoked cigarettes recently	94.4% (67)	94.4% (67)	93.3% (28)	95.1% (39)	-	94.2% (49)	-	-	94.7% (54)	-
Percentage of students who reported their parents felt cigarette use to be wrong or very wrong	97.1% (68)	97.1% (68)	96.7% (29)	97.5% (39)	-	96.2% (50)	-	-	96.5% (55)	-
<b>TOBACCO</b>										
Percentage of students who ever smoked a whole cigarette (lifetime)	5.8% (4)	5.8% (4)	3.4% (1)	7.5% (3)	-	5.8% (3)	-	-	3.6% (2)	-
Percentage of students who smoked a whole cigarette for the first time before age 11 years (age of onset)	4.3% (3)	4.3% (3)	3.4% (1)	5.0% (2)	-	3.8% (2)	-	-	1.8% (1)	-
Percentage of students who smoked cigarettes on one or more of the past 30 days (recent)	1.5% (1)	1.5% (1)	0% (0)	2.5% (1)	-	2.0% (1)	-	-	1.8% (1)	-
Percentage of students who smoked cigarettes on 20 or more of the past 30 days (frequent)	0% (0)	0% (0)	0% (0)	0% (0)	-	0% (0)	-	-	0% (0)	-

# Statewide Prevention Needs Assessment and Surveillance System

## Status

- Online data collection and reporting system developed
- Two-year pilot of MiPHY:
  - Completed Spring 2006
  - Spring 2007 in progress
- Training for schools:
  - Implementation and data interpretation trainings developed
  - Using and Bridging Data trainings – coming soon

## Michigan YRBS

- State-level
- State trends
- “Odd” years
- Grades 9-12
- Risk behaviors
- Paper/Pencil
- Provide benchmarks

## MiPHY

- Local-level, aggregated to county
- Local trends
- “Even” years
- Grades 7, 9, 11
- Risk behaviors, risk and protective factors
- Web-based

**Great Partners!**

# Michigan Department of Education Contacts

## For the Michigan Profile for Healthy Youth:

Bob Higgins  
Project Director  
[higginsr@michigan.gov](mailto:higginsr@michigan.gov)  
(517) 373-1024

Byron Doty  
Project Coordinator  
[dotyb@michigan.gov](mailto:dotyb@michigan.gov)  
(517) 241-2293

[www.michigan.gov/miphy](http://www.michigan.gov/miphy)

## For the Michigan Youth Risk Behavior Survey:

Kim Kovalchick  
Michigan YRBS  
Coordinator  
[kovalchickk@michigan.gov](mailto:kovalchickk@michigan.gov)  
(517) 241-4292

[www.michigan.gov/yrbs](http://www.michigan.gov/yrbs)